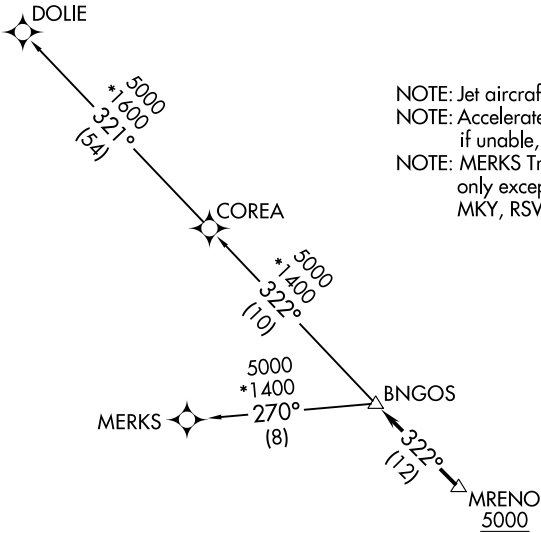


RNAV-1 DME/DME/IRU or GPS.	TOP ALTITUDE: ASSIGNED BY ATC	MIAMI DEP CON 125.5 354.1
RADAR required.		ATIS*

132.275 269.9
CLNC DEL
121.75 275.8
GND CON
121.75 275.8
HOMESTEAD TOWER
133.45 279.55

NOTE: Jet aircraft only.
NOTE: Accelerate to 250K until leaving 10000,
if unable, advise ATC.
NOTE: MERKS Transition ATC assigned
only except aircraft landing:
MKY, RSW, APF, PGD and FMY.



TAKEOFF MINIMUMS

Rwy 6: Standard with minimum climb of 500'/NM to 1800.
Rwy 24: Standard with minimum climb of 500'/NM to 2200.

NOTE: Chart not to scale.

<div><div>▼</div><div>DEPARTURE ROUTE DESCRIPTION</div></div> <div><div>TAKEOFF RUNWAY 6: Climb on heading 055° or as assigned by ATC for RADAR vectors to cross MRENO at or above 5000, thence. . .</div><div>TAKEOFF RUNWAY 24: Climb on heading 235° or as assigned by ATC for RADAR vectors to cross MRENO at or above 5000, thence. . .</div><div>. . .on track 322° to BNGOS, then on assigned transition, maintain ATC assigned altitude, expect filed altitude within 10 minutes after departure.</div><div>COREA TRANSITION (BNGOS4.COREA)</div><div>DOLIE TRANSITION (BNGOS4.DOLIE)</div><div>MERKS TRANSITION (BNGOS4.MERKS)</div></div>
