

CINCINNATI APP CON
119.7 363.15 (090°-269°)
123.875 363.15 (270°-089°)
D-ATIS 134.375

RNAV 1 - DME/DME/IRU or GPS.

RADAR required.

ARRIVAL ROUTE DESCRIPTION

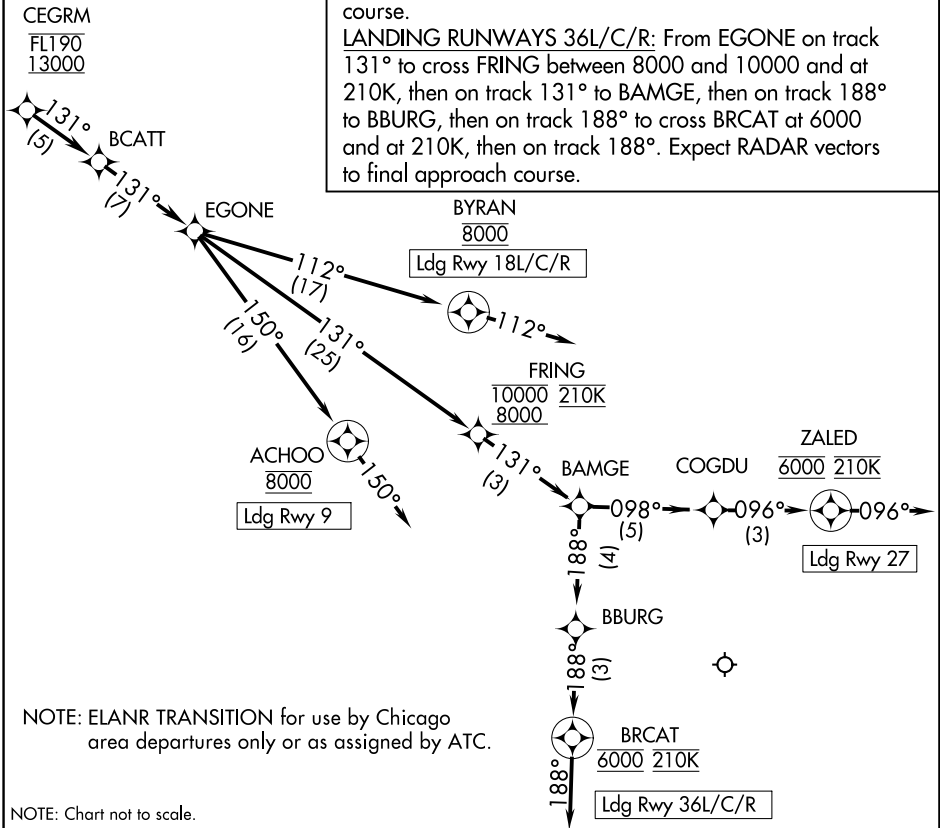
From CEGRM on track 131° to BCATT, then on track 131° to EGONE.

LANDING RUNWAY 9: From EGONE on track 150° to cross ACHOO at 8000, then on track 150°. Expect RADAR vectors to final approach course.

LANDING RUNWAYS 18L/C/R: From EGONE on track 112° to cross BYRAN at 8000, then on track 112°. Expect RADAR vectors to final approach course.

LANDING RUNWAY 27: From EGONE on track 131° to cross FRING between 8000 and 10000 and at 210K, then on track 131° to BAMGE, then on track 098° to COGDU, then on track 096° to cross ZALED at 6000 and at 210K, then on track 096°. Expect RADAR vectors to final approach course.

LANDING RUNWAYS 36L/C/R: From EGONE on track 131° to cross FRING between 8000 and 10000 and at 210K, then on track 131° to BAMGE, then on track 188° to BBURG, then on track 188° to cross BRCAT at 6000 and at 210K, then on track 188°. Expect RADAR vectors to final approach course.



NOTE: Chart not to scale.

SE-1, 16 MAY 2024 to 13 JUN 2024

SE-1, 16 MAY 2024 to 13 JUN 2024